

R EISENBERG PRESENTS, INC.

Regina Eisenberg
regina@stationrelations.com / 510.550.1706

and



October 20, 2009

sound|stage

Season Eight in HD / 1701-1706

Premieres January 21, 2010 on 

Producers: WTTW National Productions and HDReady

HD NOLA Code: SOUN

***Soundstage 1701-1706* Lineup:**

Soundstage 1701: Tim McGraw, January 21, 2010, 10 pm ET

Soundstage 1702: The Fray, January 28, 2010, 10 pm ET

Soundstage 1703: 3 Girls and Their Buddy, February 4, 2010, 10 pm ET

Soundstage 1704: Lynyrd Skynyrd, February 11, 2010, 10 pm ET

Soundstage 1705: Faith Hill Greatest Hits, February 18, 2010, 10 pm ET

Soundstage 1706: Willie Nelson, February 25, 2010, 10 pm ET

Broadcast Rights: 6 releases over 2 years

Dear colleague:

The 2009 ***Soundstage*** lineup of superstars continues! Faith Hill, Willie Nelson, Lynyrd Skynyrd and more! Six programs (***Soundstage 1701-1706***) comprise the winter 2010 season running Thursdays, beginning January 21, 2010, and continuing through February 25, 2010 – 10 pm ET.

Earlier ***Soundstage*** series have received widespread critical acclaim and featured such icons as Bon Jovi, Stevie Nicks, Foreigner, the Dave Matthews Band, John Fogerty, Tom Petty, B.B. King and Bonnie Raitt.

Here are the **Soundstage 1701-1706** Icons:

Soundstage 1701: Tim McGraw

Since country singer and actor **Tim McGraw's** career began in the early 1990s, he has sold almost 40 million albums and 30 Number One singles. He has won 14 Academy of Country, 11 Country Music Association, 10 American Music, three Grammy and three People's Choice Awards. His Soul2Soul II tour with wife Faith Hill is the highest grossing tour in country music history, and one of the top five among all genres of music.

(1701 Feeds: 1/21/10, 10 pm ET)

Soundstage 1702: The Fray

The Fray is a four-member piano rock band with Christian influences. The band is best known for the song "How to Save a Life" which charted in the top three of the Billboard Hot 100. **The Fray** also found national success with "Cable Car" and "You Found Me" which was a top-15 hit in the US & Canada.

The Fray packs a punch with an emotion-filled performance featuring songs from 2005's *How to Save A Life* and their eponymous 2009 album *The Fray*. Singer Isaac Slade leads an expressive set, always connecting with the audience, as he belts out hits including "Never Say Never," "How To Save A Life," "You Found Me" and "Cable Car."

(1702 Feeds: 1/28/10, 10 pm ET)

Soundstage 1703: 3 Girls and Their Buddy

Country singer/songwriter Buddy Miller is joined on tour by three diverse female artists: Grammy winner and legendary folksinger Emmylou Harris, folk/rock/country singer & guitarist Patty Griffin and contemporary folk/rock singer & guitarist Shawn Colvin.

(1703 Feeds: 2/4/10, 10 pm ET)

Soundstage 1704: Lynyrd Skynyrd

Lynyrd Skynyrd is an American rock band formed in Jacksonville, FL in 1964. The Southern rock band rose to worldwide fame before the tragic deaths of its founding member and lead singer Ronnie VanZant and other band members in the late '70s. They reformed in 1987 with Johnny VanZant as the lead, continue to play music and were inducted into the Rock and Roll Hall of Fame in 2006.

(1704 Feeds: 2/11/10, 10 pm ET)

Soundstage 1705: Faith Hill Greatest Hits

Charismatic country superstar **Faith Hill** invites you to celebrate a career brimming with accolades and number one singles on this episode of **Soundstage**. Backed by a full orchestra, the Southern singer presents selections from her album *Faith Hill: The Hits*. In an exceptional performance which includes "This Kiss," "The Way You Love Me," and Grammy award winning songs "Breathe" and "Cry" as well as countless other showstoppers, Faith presents a soulful set captured at the Sears Centre Arena.

(1705 Feeds: 2/18/10, 10 pm ET)

Soundstage 1706: Willie Nelson

Over the last 50 years, legendary icon **Willie Nelson** has continued to be an enduring and compelling presence in music. The troubadour mixes up elements

of folk, blues, classic country, western swing and a little gospel during his versatile *Soundstage* set.

Displaying a close connection with the audience, Willie and his-eight piece band (featuring a banjo, mandolin, fiddle, steel guitar and more) gather round the stage to highlight songs from his first-ever bluegrass album, produced in collaboration with T-Bone Burnett. Tipping his hat to the genre, Willie puts his stamp on standards like Bob Wills' "Trouble In Mind," Al Dexter's "Pistol Packin' Mamma," and the Joe "Red" Hayes and Jack Rhodes classic "Satisfied Mind." Other selections include "Whiskey River," "Drinking Champagne" and "Dark As A Dungeon."

(1706 Feeds: 2/25/10, 10 pm ET)

All ***Soundstage*** concerts are filmed in HD with Dolby Surround 5.1. Most of the 1700 series concerts were filmed before an intimate studio audience in WTTW's Grainger Studio in Chicago.

Soundstage is produced by WTTW National Productions and HDReady. Joe Thomas/HDReady is the producer/director and Nicolette Ferri is executive producer. Parke Richeson is executive-in-charge of production. The series is distributed by PBS and underwritten by MasterCard International. Local underwriting is permitted as long as the local underwriter is not a competitor of the national underwriter. The companion website is www.pbs.org/soundstage.

Please contact me if you have questions. A fact sheet follows.

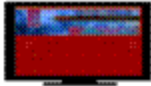
Very truly yours,

Regina

Regina Eisenberg

R EISENBERG PRESENTS, INC.

regina@stationrelations.com | 510.550.1706
2340 Powell Street, Suite 333, Emeryville, CA 94608



R EISENBERG PRESENTS, INC.
Regina Eisenberg
regina@stationrelations.com | 510.550.1706

and



Fact Sheet
Soundstage 1701-1706

NOLA Code:

SOUN

***Soundstage 1701-1706* Lineup:**

Soundstage 1701: Tim McGraw, January 21, 2010, 10 pm ET

Soundstage 1702: The Fray, January 28, 2010, 10 pm ET

Soundstage 1703: 3 Girls and Their Buddy, February 4, 2010, 10 pm ET

Soundstage 1704: Lynyrd Skynyrd, February 11, 2010, 10 pm ET

Soundstage 1705: Faith Hill Greatest Hits, February 18, 2010, 10 pm ET

Soundstage 1706: Willie Nelson, February 25, 2010, 10 pm ET

Episodes/Length:

6/60

Rights:

Broadcast: 6 releases/2 years

Video:

HD

Audio:

Dolby Surround 5.1

Producer:

WTTW National Productions and HD Ready

Executive-in-Charge of Production: Parke Richeson

Producer/Director: Joe Thomas

Executive Producer: Nicolette Ferri

Distributor:



Underwriters:

MasterCard International

Local Underwriting:

Local underwriting is permitted as long as the underwriter is not a competitor of the national underwriter.

Websites:

www.pbs.org/soundstage

www.wttw.com

www.reisenbergpresents.com

Contacts:

Regina Eisenberg

Station Relations | **R EISENBERG PRESENTS, INC.**

510.550.1706 | regina@stationrelations.com

2340 Powell Street, Ste. 333 | Emeryville, CA 94608

Publicity & PR:

Shaunese Teamer

WTTW National Productions

steamer@wttw.com

773-509-5441

Maria C. Malta

PFA (Paul Freundlich Associates)

mmalta@pfamedia.net

212-334-6116

Viewer Questions & Comments:

Christina Pagones

Project & Brand Manager

WTTW National Productions

cpagones@wttw.com

773-509-5638

About the Shows:

Soundstage 1701: Tim McGraw

Since country singer and actor **Tim McGraw's** career began in the early 1990s, he has sold almost 40 million albums and 30 Number One singles. He has won 14 Academy of Country, 11 Country Music Association, 10 American Music, three Grammy and three People's Choice Awards. His Soul2Soul II tour with wife Faith Hill is the highest grossing tour in country music history, and one of the top five among all genres of music.

(1701 Feeds: 1/21/10, 10 pm ET)

Soundstage 1702: The Fray

The Fray is a four-member piano rock band with Christian influences. The band is best known for the song "How to Save a Life" which charted in the top three of the Billboard Hot 100. **The Fray** also found national success with "Cable Car" and "You Found Me" which was a top-15 hit in the US & Canada.

The Fray packs a punch with an emotion-filled performance featuring songs from 2005's *How to Save A Life* and their eponymous 2009 album *The Fray*. Singer Isaac Slade leads an expressive set, always connecting with the audience, as he belts out hits including "Never Say Never," "How To Save A Life," "You Found Me" and "Cable Car."
(1702 Feeds: 1/28/10, 10 pm ET)

Soundstage 1703: 3 Girls and Their Buddy

Country singer/songwriter Buddy Miller is joined on tour by three diverse female artists: Grammy winner and legendary folksinger Emmylou Harris, folk/rock/country singer & guitarist Patty Griffin and contemporary folk/rock singer & guitarist Shawn Colvin.
(1703 Feeds: 2/4/10, 10 pm ET)

Soundstage 1704: Lynyrd Skynyrd

Lynyrd Skynyrd is an American rock band formed in Jacksonville, FL in 1964. The Southern rock band rose to worldwide fame before the tragic deaths of its founding member and lead singer Ronnie VanZant and other band members in the late '70s. They reformed in 1987 with Johnny VanZant as the lead, continue to play music and were inducted into the Rock and Roll Hall of Fame in 2006.
(1704 Feeds: 2/11/10, 10 pm ET)

Soundstage 1705: Faith Hill Greatest Hits

Charismatic country superstar **Faith Hill** invites you to celebrate a career brimming with accolades and number one singles on this episode of **Soundstage**. Backed by a full orchestra, the Southern singer presents selections from her album *Faith Hill: The Hits*. In an exceptional performance which includes "This Kiss," "The Way You Love Me," and Grammy award winning songs "Breathe" and "Cry" as well as countless other showstoppers, Faith presents a soulful set captured at the Sears Centre Arena.
(1705 Feeds: 2/18/10, 10 pm ET)

Soundstage 1706: Willie Nelson

Over the last 50 years, legendary icon **Willie Nelson** has continued to be an enduring and compelling presence in music. The troubadour mixes up elements of folk, blues, classic country, western swing and a little gospel during his versatile *Soundstage* set.

Displaying a close connection with the audience, Willie and his-eight piece band (featuring a banjo, mandolin, fiddle, steel guitar and more) gather round the stage to highlight songs from his first-ever bluegrass album, produced in collaboration with T-Bone Burnett. Tipping his hat to the genre, Willie puts his stamp on standards like Bob Wills' "Trouble In Mind," Al Dexter's "Pistol Packin' Mamma," and the Joe "Red" Hayes and Jack Rhodes classic "Satisfied Mind." Other selections include "Whiskey River," "Drinking Champagne" and "Dark As A Dungeon."

(1706 Feeds: 2/25/10, 10 pm ET)

regina@stationrelations.com | 510.550.1706
2340 Powell Street, Suite 333, Emeryville, CA 94608